

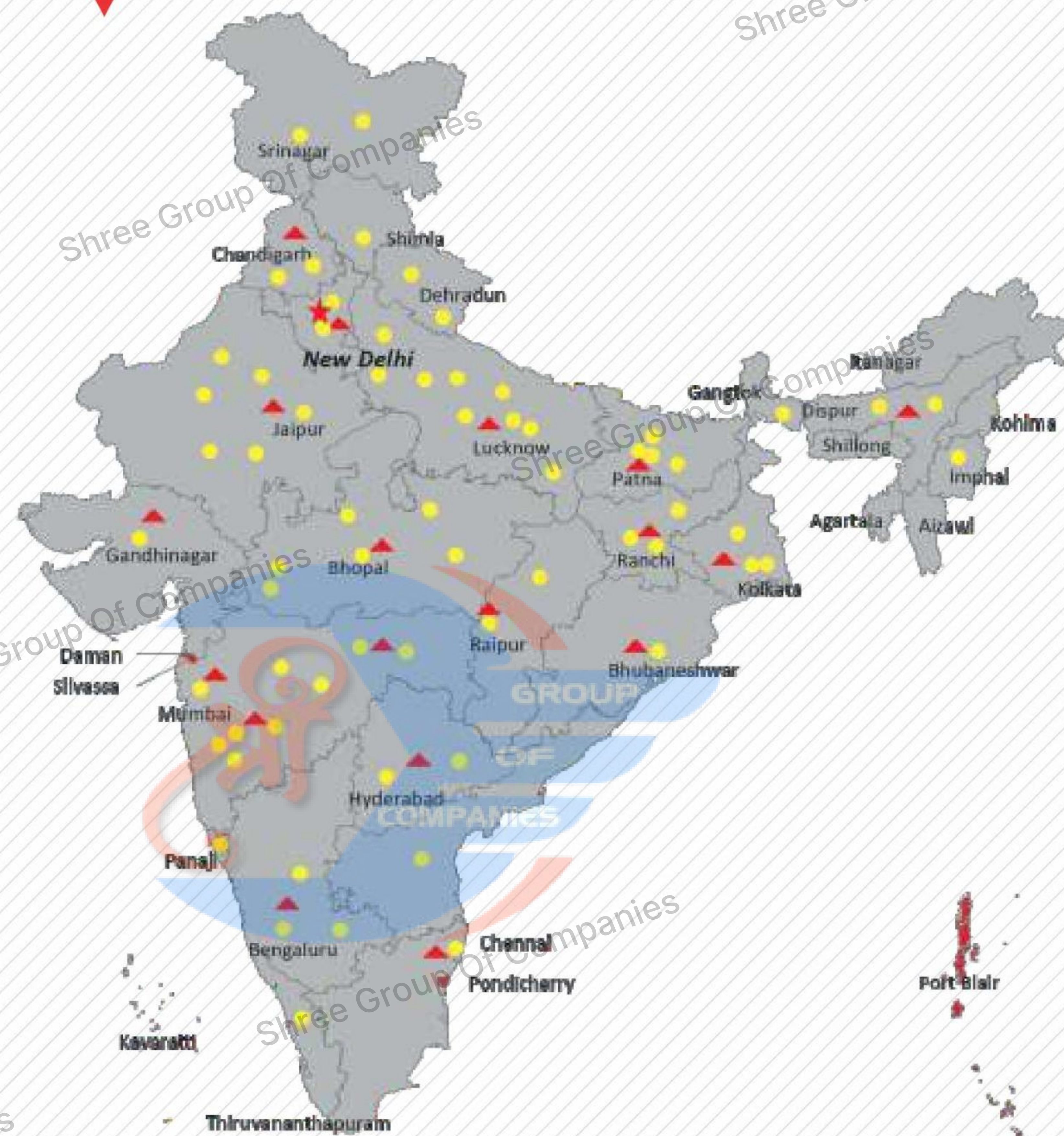
# HYDRA 15 4P



# ESCORTS CONSTRUCTION EQUIPMENT



## OUR REACH



★ Head Office ▲ 18 Business Center ● 73 Dealers & 250+ branches ■ PAN INDIA - 825+ Network to support as Service and Spares



**Toll Free No.:**  
**1800- 180- 4488**

(Timings: 9.30 am - 6.00 pm, Monday to Friday)

e-mail: ece.help@escorts.co.in

Escorts Construction Equipment: Plot No. 219, Sector- 58, Ballabhgarh- 121 004, Faridabad, Haryana (INDIA) Tel.: 0129-2306574/2306598/2306571 Fax: 0129-2306572 Website: www.escortsgroup.com

Authorised Dealer

Contact : 9300723311

# HYDRA 15

4P



Capacity  
**15 T**



Hoist  
**6 Falls**



Service Interval - Engine  
**500 hrs.**



Straight Axle  
**Heavy Duty**



Structure  
**Robust**

Contact : 9300723311

(Accessories as shown in the picture may not be the part of standard fitment and are subject to change without prior notice.)

Hub/May/2020



## SPECIFICATIONS

Contact : 9300723311

### RATED CAPACITY

15 Tonne at	1.6 m radius
1.2 Tonne at	12.5 m radius

### ENGINE

Make & Model	Escorts AE 4.312C-3A four cylinder, Water cooled diesel engine developing 49.5 HP @ 2200 RPM or equivalent
--------------	--

### TRANSMISSION

Drive	2 Wheel drive
Type	Heavy duty transmission developed especially for crane application. Constant mesh gearbox coupled with straight drive axle. Eight forward and two reverse speeds with high/low selector lever
Creep Speed	1.9 km/hr. ideal for crane operation
Max. Speed	29 km/hr. (unladen)
Clutch	Heavy duty clutch, wire woven, asbestos free

### STEERING

Type	Articulated power steering, hydraulically controlled through 2 double acting jacks
Articulation	Up to 56°
Turning Radius	6.5 m

### BRAKES

Front Wheel	Pneumatic assisted hydraulic brakes
Rear Wheel	Disc brakes actuated through a slave cylinder
Parking	Hand operated mechanically actuated at rear wheels

### TYRES

Front	11.00 X 20 - 16 PR (4 nos.), inflation pressure 110 - 115 PSI
Rear	13.00 X 24 - 12 PR (2 nos.), inflation pressure 35 PSI. Water ballasted

### TRACK

Front	1930 mm
Rear	1680 mm

### HOIST MECHANISM

Hoist	Hydraulic winch. Six falls (Winch capacity 12 T). Rope dia 13 mm
-------	--

### ELECTRICAL SYSTEM

Type	12V Single battery, Negative earth
------	------------------------------------

### CAPACITIES

Fuel Tank	45 ltrs.
Hydraulic Tank	65 ltrs.

### HYDRAULIC SYSTEM

Pump	Vane type hydraulic pump
Control Valve	4 spool control valve with built in pressure relief valve and precision control
Hydraulic Filter	Suction line has a 100 mesh inline strainer while return line has 25 microns full flow filter

### BOOM

Telescoping	4 parts, 3 parts hydraulically powered & fully synchronized, 4th part power extended & manually pinned
Type	Slotted boom with rope compensation
Derricking	Through double acting jacks

### OVERALL DIMENSIONS

Length	11640 mm
Width	2550 mm
Height	3250 mm

### OPERATING WEIGHT (KG)

Gross Vehicle Weight	11600 kg
----------------------	----------

### SAFETY SYSTEM

Rope compensation for auto leveling
Overload audio warning system
Hose protection failure device
Safety brakes on hoist
Cylinder guard for protection

### STANDARD ACCESSORIES

All Weather Cabin
Lift Cylinder Guard
Turn & Reverse Lamp
Front Bumper
Rear View Mirror
Reflectors

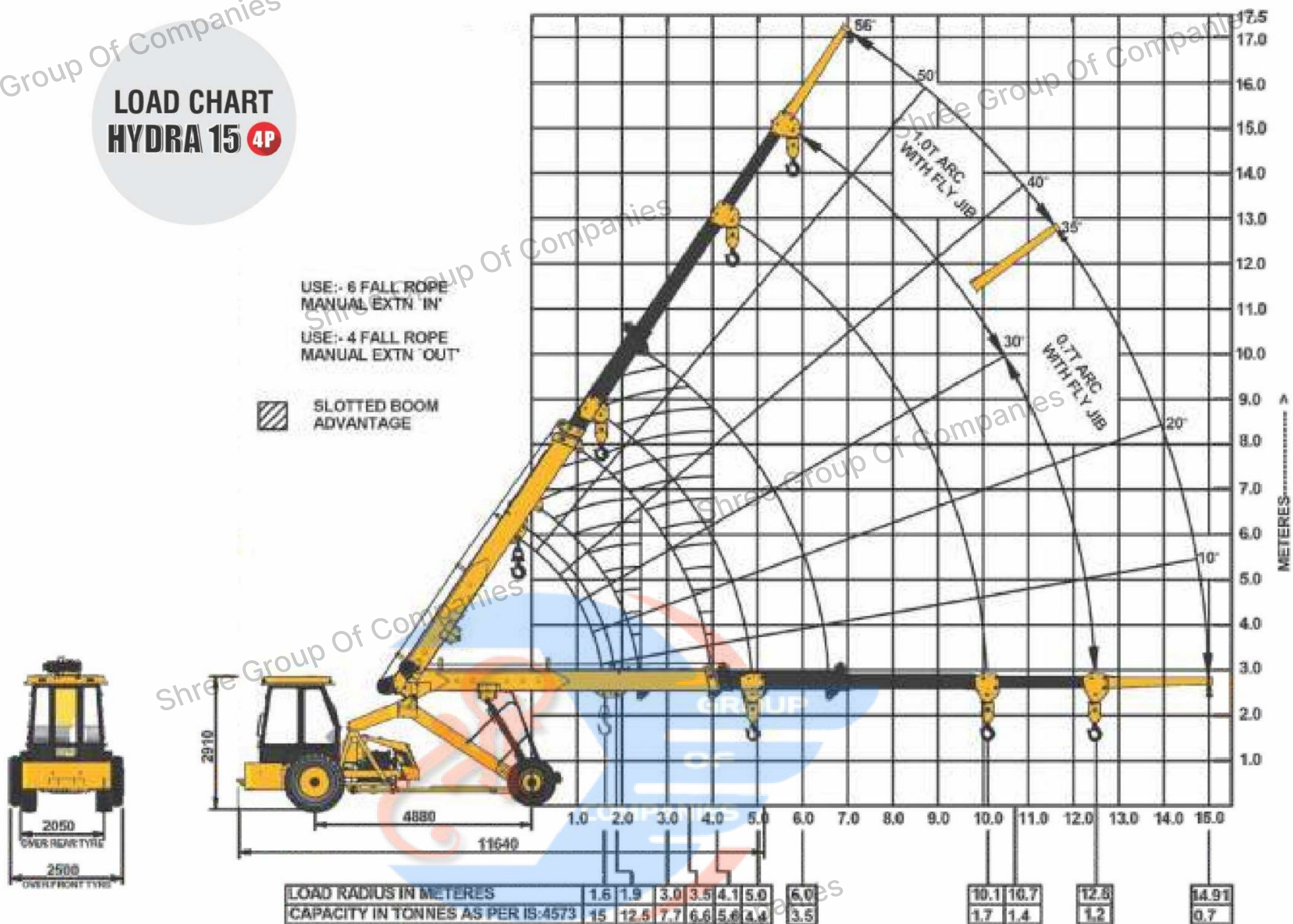
### OPTIONAL ACCESSORIES

Fly Jib
Tool Box
Spark Arrestor
Tyre Mud Guard
Steering Wheel
Fire Extinguisher
Safe Load Indicator (SLI)
Heavy Duty Bumper
14 x 24 Heavy Duty Tyres
Air Brakes on Front Wheel
Over Hoist & Hydraulic Cutoff Kit

Contact : 9300723311

**HYDRA 15** 4P

### LOAD CHART HYDRA 15 4P



Rated loads are calculated for operation on leveled surface.

## FEATURES



**SLOTTED BOOM AND ROPE**  
Compensation for precision handling & auto leveling of loads.



**HYDRAULIC WINCH OF 15T**  
Capacity with 6 falls snatch block for precision handling & low maintenance.



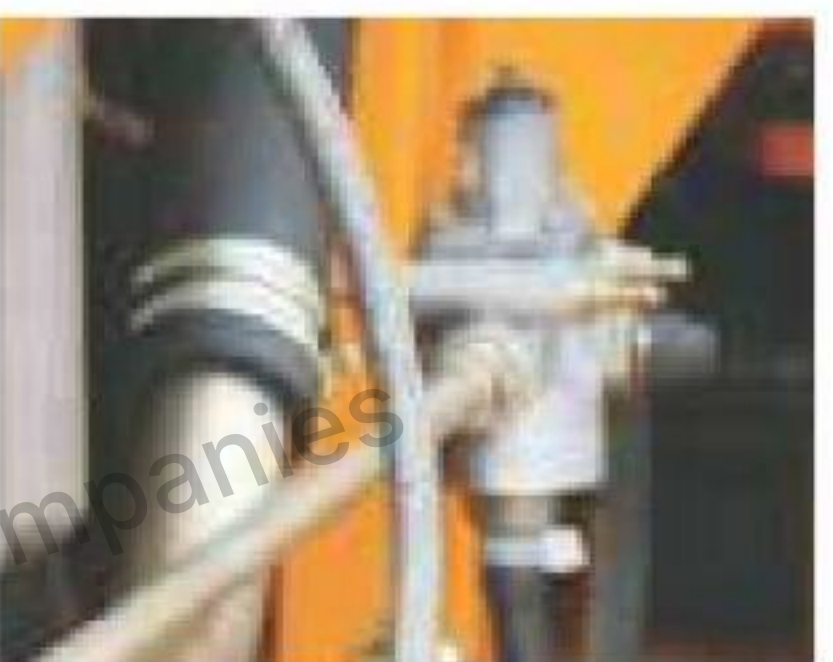
**TRANSMISSION**  
Heavy duty straight axle with 2 years' warranty, with constant mesh transmission.



**ENGINE**  
Escorts engine BS-III (CEV compliant) - high on power/torque & low on fuel consumption & maintenance.



**CABIN**  
Ergonomically designed spacious cabin with modern dashboard for utmost operator comfort and operation.



**REAR BRAKES**  
Disc brakes at the rear for effective braking.